

iPhone Instructions

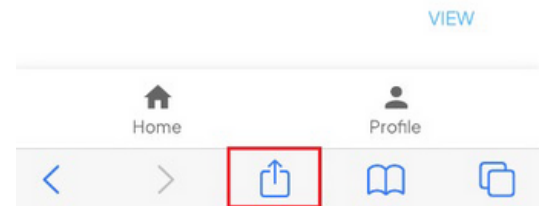
Using your browser, enter the following link: trials.intent.ag

- Username and password are identical to the desktop version of INvision Trials

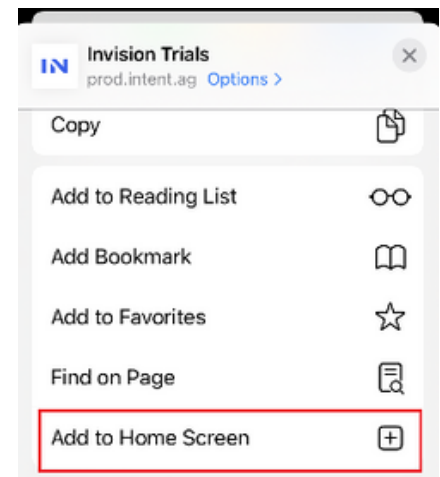
You will be prompted to select the Mobile or Desktop experience, select **Mobile**



Once you are in, you will want to select the share icon on the bottom of your screen



From there, you will want to select the **Add to Home Screen** option



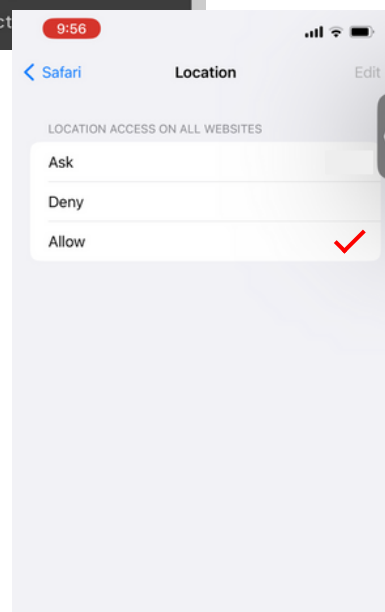
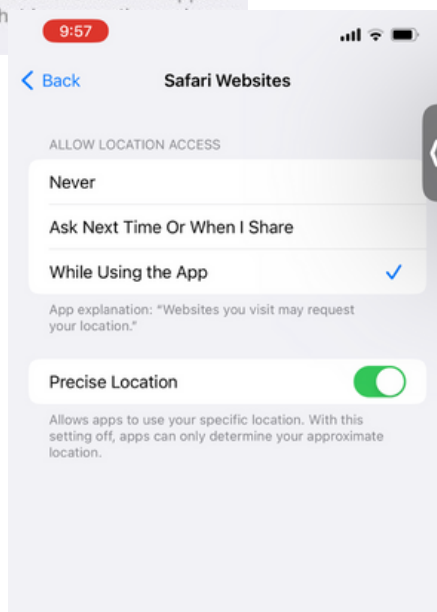
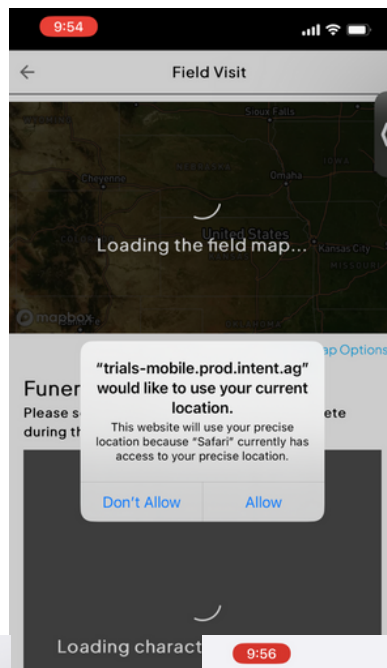
Your new PWA app, should be “downloaded”, or essentially bookmarked on your iPhone home screen



iPhone Instructions - Location Services

Can't see your location pin when loading the Mobile app?

Make sure your Location Services are turned on for the mobile browser that you use. Go to Setting/Location in your phone menu, and scroll down to Safari. (Safari for iPhones) The first time you enter the app, this box should pop up to ask you to use your current location, and you need to hit **Allow**.



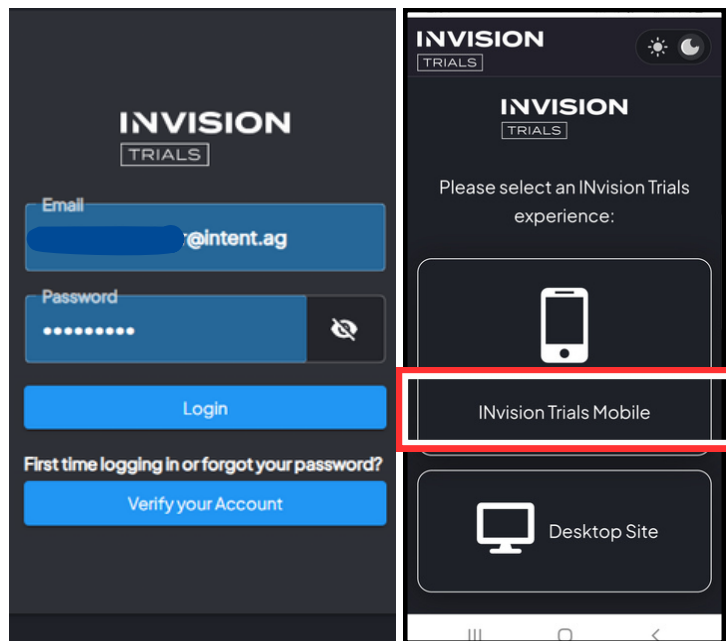
In the Safari app settings, be sure to select **While Using the App**, and in the Location settings, hit **Allow**. If the Location Services are not turned on, the location pins will not show up in Invision Trials while you are out in the field.

Android Instructions

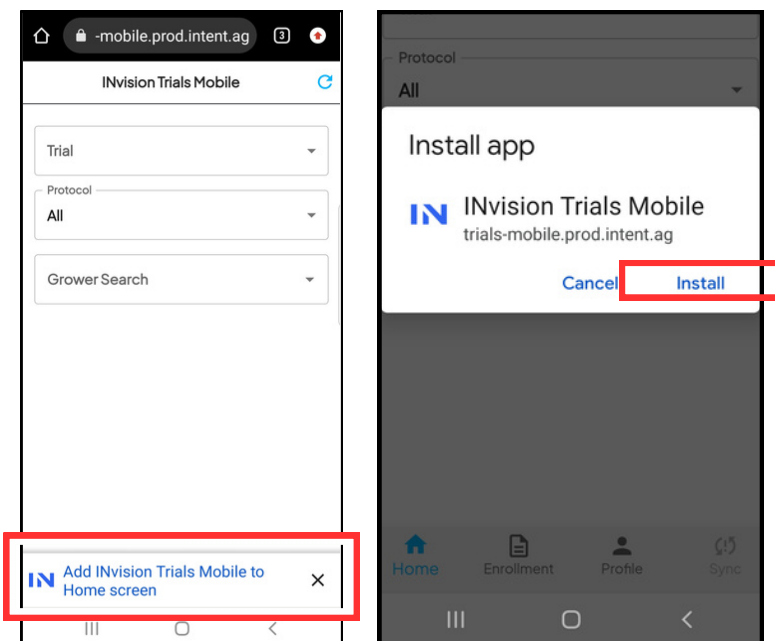
Using your browser, enter the following link: trials.intent.ag

- Username and password are identical to the desktop version of INvision Trials

You will be prompted to select the Mobile or Desktop experience, select **Mobile**



Once you are in the Mobile app, you will want to tap the icon on the bottom of your screen, to share the mobile app to your home screen. The next screen will pop up and ask if you want to install the mobile app, so select **Install**.



Android Location Settings

- Once you have entered the mobile app, you will want to select the three dots in the upper right hand corner of the screen, and select **Settings**.
- Once the settings are open, you will select **Site Settings**.
- In that screen, make sure that the **Location** setting is set to **Ask before allowing sites to know your location**.

