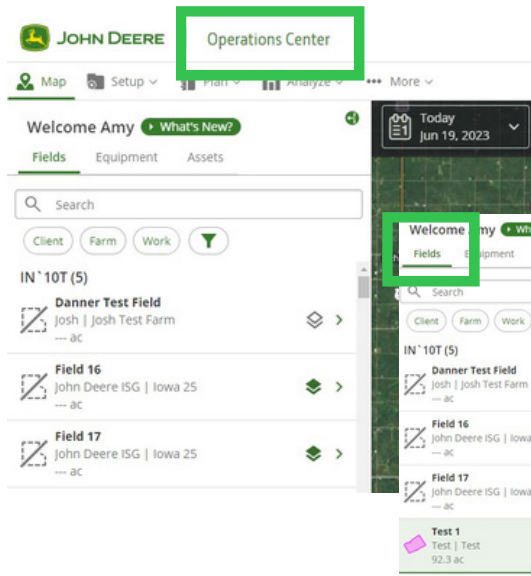
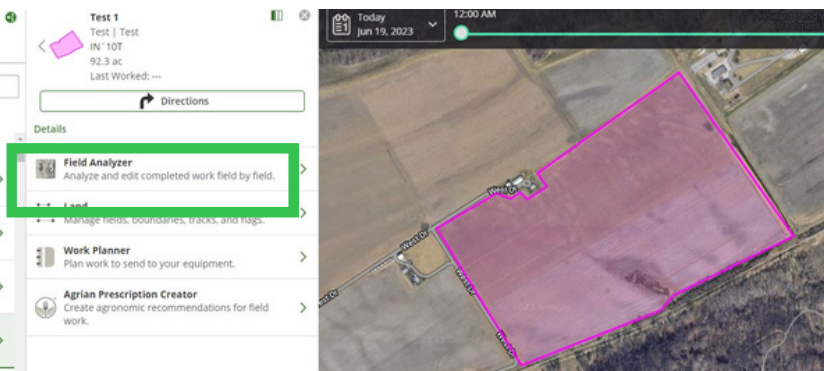


# EXPORTING DATA FROM MYJOHNDEERE®



Sign in to [www.myjohndeere.com](http://www.myjohndeere.com) and select **Operations Center**.

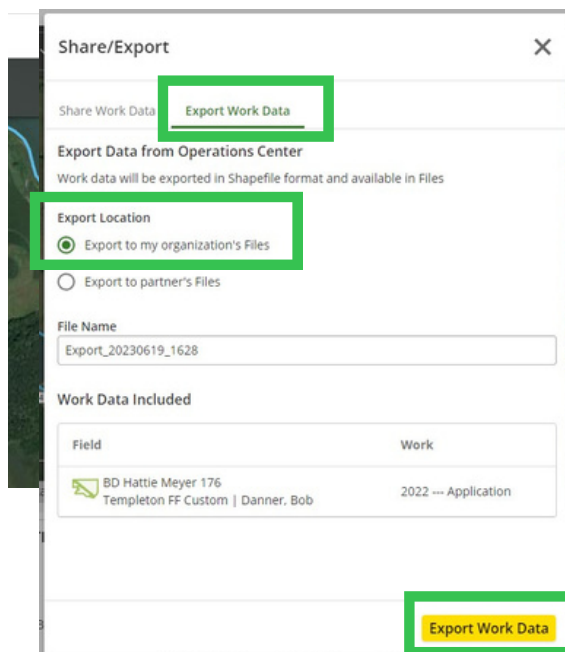
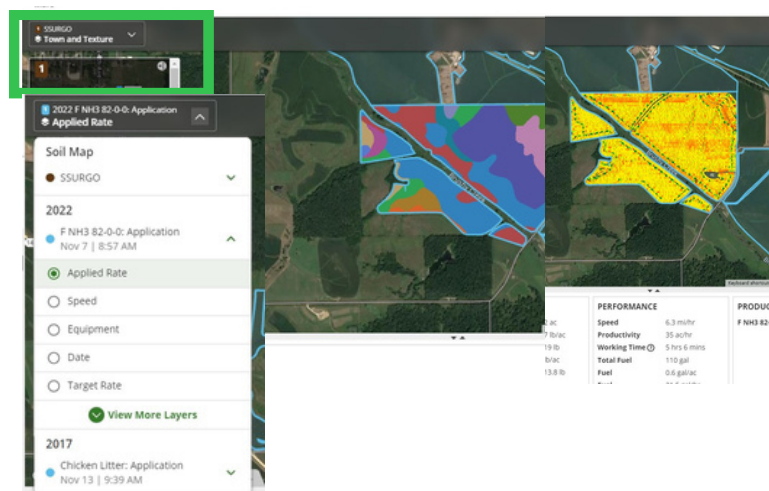
Select the **Fields** icon and then select the specific field you want to view. Next, select the **Field Analyzer** icon.



From there you can select the layers or data you want to show on the map.

This screen allows you to select planting, harvest, or application layers to export, along with other layers.

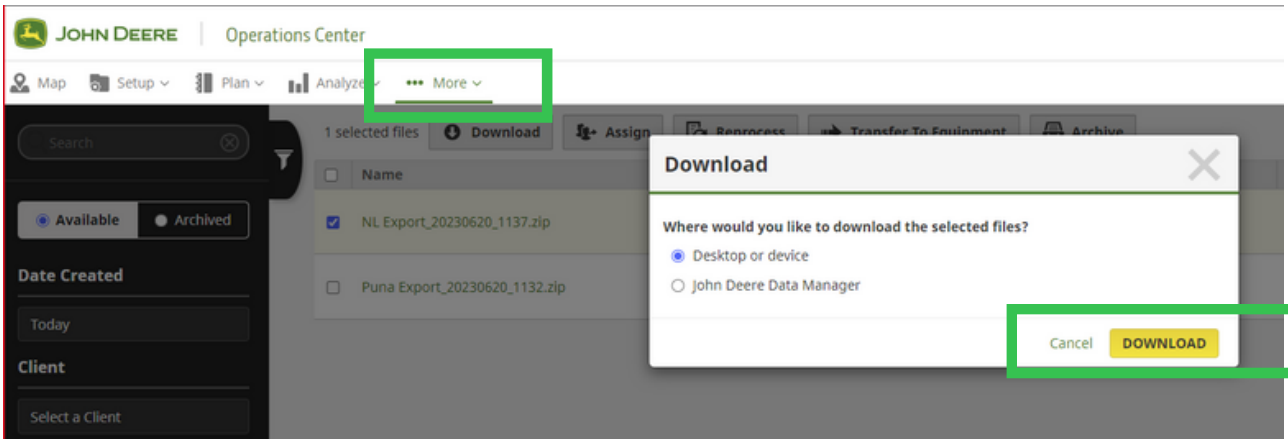
Be sure to select the variety for planting, yield for harvest, and applied rate for the application layer.



## Share/Export Data

- Once you have selected the appropriate layers, you can select **Share/Export** on the top right of the screen.
- Select **Work Data**
- Once the work data screen appears, select **Export Work Data**, and then **Export Work Data** at the bottom of that screen.

# EXPORTING DATA FROM MYJOHNDEERE®



Select the **More** dropdown box and select **download**.

Once the file is downloaded into "Files" it needs to be uploaded into INvision Trials.

---