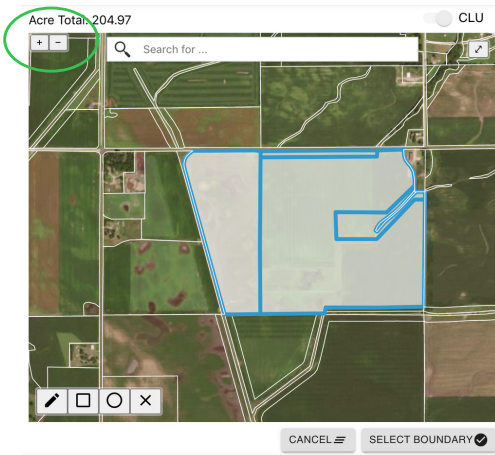


Begin by locating your field via the search bar.

You may use your current location or type in the address to find the field that you would like to select for this trial.

If you cannot locate the desired polygon, or if it doesn't accurately represent your field boundaries, please see the Resources tab on FarmerTrials.com for instructions on how to draw your boundary.



Click on the field you wish to select.

All field boundaries are outlined in white.

When selected, the field will turn white with a blue outline as shown in the image to the left.

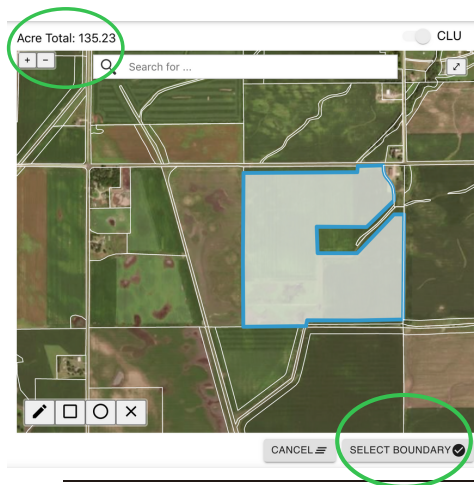
To unselect the field, click on it a second time.

It will unhighlight.

You can select multiple, continuous polygons to make a larger field.

Use "+" and "-" buttons to zoom in and out.

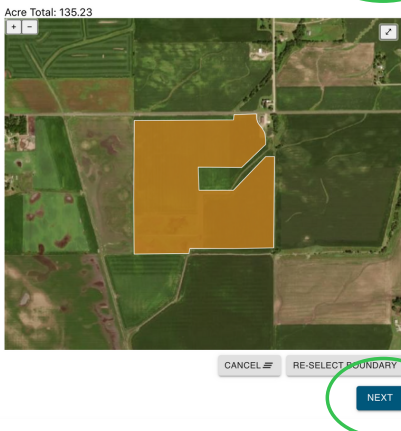
Click and drag the screen to move around.



To confirm your field selection, click "SELECT BOUNDARY".

You can view the total number of acres selected in the upper left-hand corner.

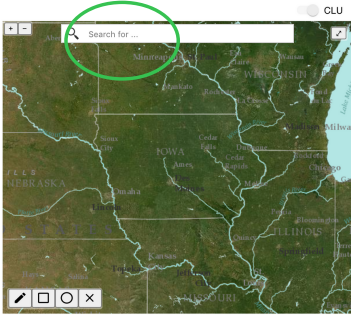
If you would like to start over or upload a boundary file instead, click "Cancel".



The chosen field will be highlighted in orange, click "NEXT" to continue.

If you would like to redo/edit the boundary, click "Re-Select Boundary".

If you would like to start over or upload a boundary file instead, click "Cancel".



Begin by locating your field via the search bar.
You may use your current location or type in the address to find the field that you would like to select for this trial.



Use the tools in the bottom left to draw the boundary of the field you are selecting.



When drawing a boundary, the recommended tool is the "draw a polygon" tool.

Draw a polygon

When drawing your boundary, you can turn off the CLU boundaries by switching the toggle in the top right corner.



When drawing a polygon, click in the corner of the field where you want to start the boundary. Then click on different portions of the map to create the outer points.

Do not drag the line, just click to select your points. **You must connect the points to form a complete polygon** or double click to close the boundary. Your polygon(s) must be contiguous.

Click the "back" button to undo.

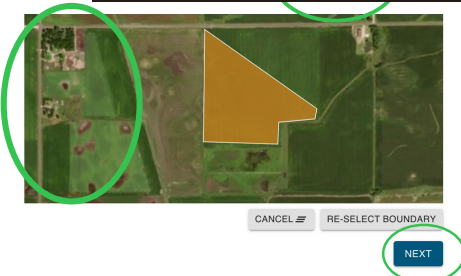


The drawn figure will be shaded white and outlined in blue.

If the boundary is correct, click "Select Boundary".

If you wish to start over or upload a boundary file instead, click "Cancel".

You can view the total amount of acres selected in the upper left-hand corner.



The chosen field will be highlighted in orange. Click "Next" to continue.

If you would like to edit the boundary, click "Re-Select Boundary". If you would like to start over or upload a boundary file instead, click "Cancel".