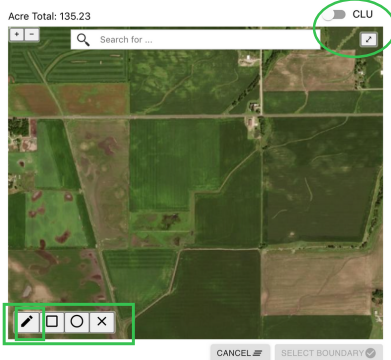


**Begin by locating your field via the search bar.**

You may use your current location or type in the address to find the field that you would like to select for this trial.



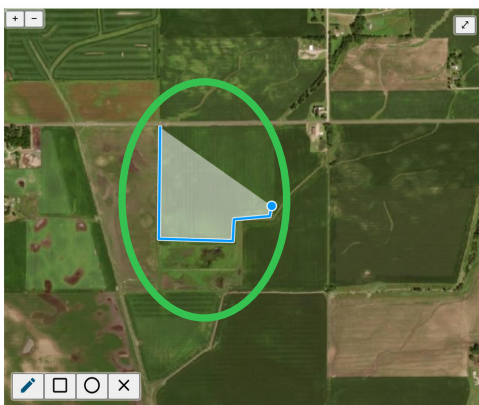
**Use the tools in the bottom left to draw the boundary of the field you are selecting.**



**When drawing a boundary, the recommended tool is the "draw a polygon" tool.**

Draw a polygon

When drawing your boundary, you can turn off the CLU boundaries by switching the toggle in the top right corner.



**When drawing a polygon, click in the corner of the field where you want to start the boundary. Then click on different portions of the map to create the outer points.**

Do not drag the line, just click to select your points. **You must connect the points to form a complete polygon** or double click to close the boundary. Your polygon(s) must be contiguous.

Click the "back" button to undo.

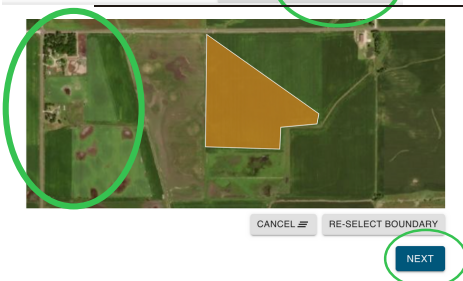


**The drawn figure will be shaded white and outlined in blue.**

**If the boundary is correct, click "Select Boundary".**

If you wish to start over or upload a boundary file instead, click "Cancel".

You can view the total amount of acres selected in the upper left-hand corner.



**The chosen field will be highlighted in orange. Click "Next" to continue.**

If you would like to edit the boundary, click "Re-Select Boundary". If you would like to start over or upload a boundary file instead, click "Cancel".