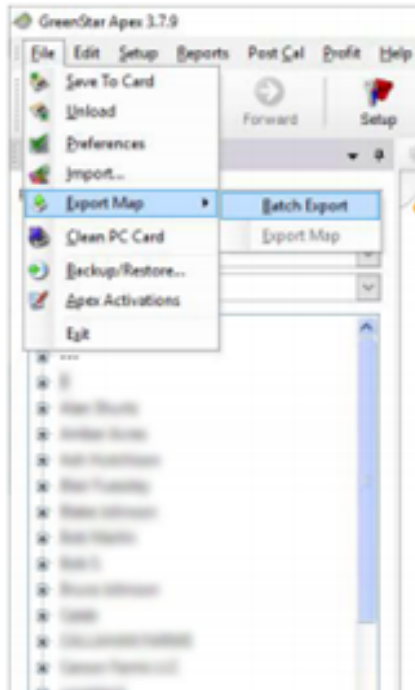


EXPORTING DIGITAL DATA FROM JOHN DEERE® APEX™



Open APEX™ and select "File", then select "Export Map" and "Batch Export"

Select the data you wish to export or select all, then select "Zipped" and "Shape". In the "Export All" option APEX has an export filter above the map tree that allows you to filter the data you want to export by client, operation or boundary list.

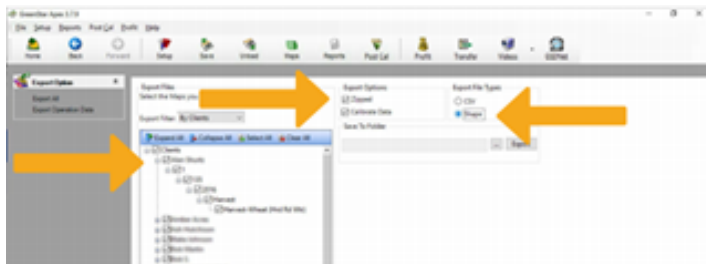
If you select filter "By Operations" a second filter box will appear to the right, allowing you to filter by Application, Harvest, Seeding, Tillage, or Other.

If you select "Exported Selected" APEX gives you two Export Options.

Zipped - When checked, APEX will compress your exported data in a .zip file format.

Calibrate Data - When checked, APEX will export the calibrated data. If this box is unchecked APEX will export the raw data.

In the "Export File Types" box select the "Shape" file format.



Confirm the export by clicking "Yes". Your export will now start.

In the "Save To Folder" box click on the "Ellipsis" button to select the location for the data to be saved.

Upload this zipped file to the Portal.

